

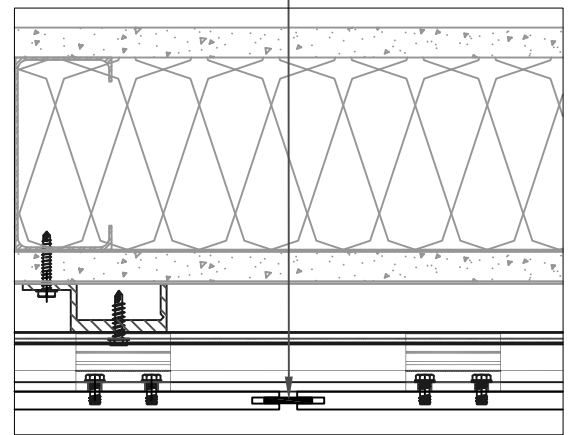
$\frac{3}{8}$ "

$\frac{2}{4}$ "

$\frac{3}{4}$ " MIN.
10 X PANEL THICKNESS MAX.

- SHEATHING BY OTHERS
- WEATHER BARRIER BY OTHERS
- RAIL (200-000)
- J-CHANNEL (110-000)
- FIXED BRACKET (200-004)
- RAIL ANCHOR (000-004)
- TRESPA METEON PANEL
- PANEL RIVET (200-005)

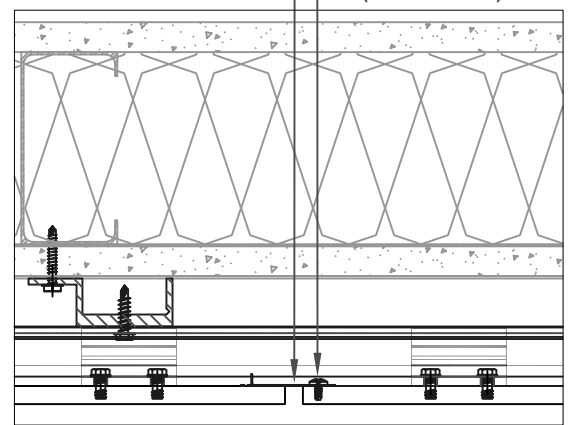
SPLINE (000-011)



SPLINE JOINT
SCALE: $\frac{1}{4}$ " = 1"

JOINT CLOSURE (000-002)

CLIP ANCHOR (000-006)



JOINT CLOSURE
SCALE: $\frac{1}{4}$ " = 1"

TRESPA
NORTH AMERICA
12267 Crosthwaite Circle
Poway, CA 92064
Phone: 858.679.2090
FAX: 858.679.0440
www.trespanorthamerica.com

CHECKED: MMS	APPROVED: DEH	DATE: 12.16.03	FILE: 4	REVISION:
VERTICAL PANEL JOINT				
TS210		SCALE: $\frac{1}{2}$ " = 1"	DETAIL # 4	

REVISION NOTES:
1. CHANGED FROM DETAIL 1M200